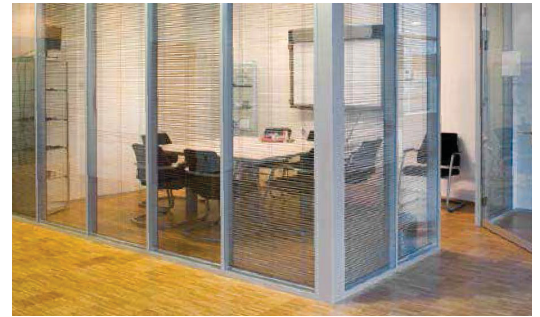


**Scheuten laminated sound
reducing safety glass**



MULTIPHON®

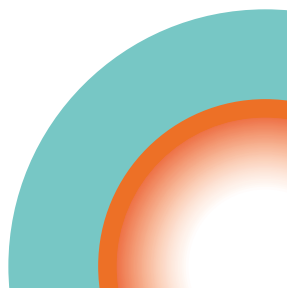
April 2021

Multiphon® laminated safety glass with special acoustic film (0.50 mm SI)

Product name	Glass Composition	Thickness approx. (mm)	Mass approx. (kg/m ²)	R _w (dB)	C (dB)	C _{tr} (dB)	R _w + C (dB)	R _w + C _{tr} (dB)	U _g - value W/m ² K EN 673	Classification EN 356	Classification EN 12600
Multiphon® 33.1 SI	33.1 SI	6	15	35	-1	-4	34	31	5,6	P1A	2B2
Multiphon® 44.1 SI	44.1 SI	8	20	37	0	-2	37	35	5,5	P1A	1B1
Multiphon® 55.1 SI	55.1 SI	10	25	39	-1	-3	38	36	5,5	P1A	1B1
Multiphon® 66.1 SI	66.1 SI	12	30	40	-1	-3	39	37	5,4	P1A	1B1
Multiphon® 88.1 SI	88.1 SI	16	40	41	-1	-3	40	38	5,3	P1A	1B1

Multiphon® laminated safety glass with special acoustic film (0.76 mm SI)

Product name	Glass Composition	Thickness approx. (mm)	Mass approx. (kg/m ²)	R _w (dB)	C (dB)	C _{tr} (dB)	R _w + C (dB)	R _w + C _{tr} (dB)	U _g - value W/m ² K EN 673	Classification EN 356	Classification EN 12600
Multiphon® 33.2 SI	33.2 SI	7	15	36	0	-3	36	33	5,6	P1A	1B1
Multiphon® 44.2 SI	44.2 SI	9	20	37	0	-2	37	35	5,5	P2A	1B1
Multiphon® 55.2 SI	55.2 SI	11	25	39	-1	-3	38	36	5,4	P2A	1B1
Multiphon® 66.2 SI	66.2 SI	13	30	40	-1	-3	39	37	5,4	P2A	1B1
Multiphon® 88.2 SI	88.2 SI	17	40	41	-1	-3	40	38	5,3	P2A	1B1



For comparison: Multisafe® / values according to EN 12758

Product name	Glass Composition	Thickness approx. (mm)	Mass approx. (kg/m ²)	R _w (dB)	C (dB)	C _{tr} (dB)	R _w + C (dB)	R _w + C _{tr} (dB)	U _g - value W/m ² K EN 673	Classification EN 356	Classification EN 12600
Multisafe® 33.x	33.x	7	15	32	-1	-3	31	29	-	-	-
Multisafe® 44.x	44.x	9	20	33	-1	-3	32	30	-	-	-
Multisafe® 55.x	55.x	11	25	34	-1	-3	33	31	-	-	-
Multisafe® 66.x	66.x	13	30	36	-1	-2	35	34	-	-	-
Multisafe® 88.x	88.x	17	40	36	-1	-3	35	33	-	-	-

Spectrum corrections	Distinctive sound sources
<p>C Spectrum 1 (high frequency) (A-weighted)</p>	Daily activities (conversation, music, radio, TV)
	Children playing
	Train traffic (middle / high speed)
	Motorway traffic (> 80 km/h ≈ 50 mph)
	Jet plane (short distance)
	Factories (with mainly middle and high frequency noise emission)
<p>C_{tr} Spectrum 2 (low frequency) (A-weighted)</p>	Urban traffic noise
	Train traffic (low speed)
	Aircraft (propeller)
	Jet plane (large distance)
	Disco music
	Factories (with mainly low and middle frequency noise emission)

In accordance with EN-ISO 717-1

Laboratory tests in accordance with EN-ISO-140-3 / EN-ISO-10140-2

Please refer to our website www.scheuten.com for the most recent information



info@scheuten.com • www.scheuten.com

